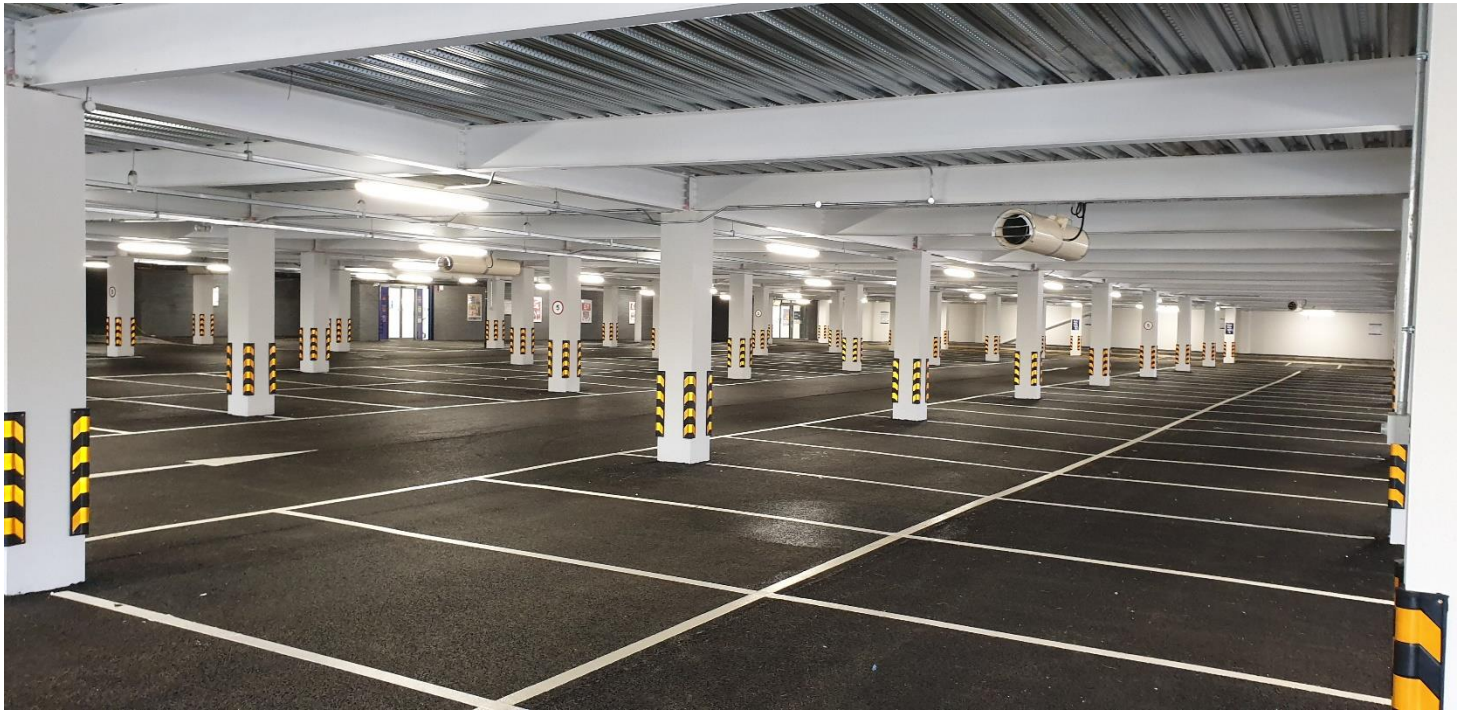
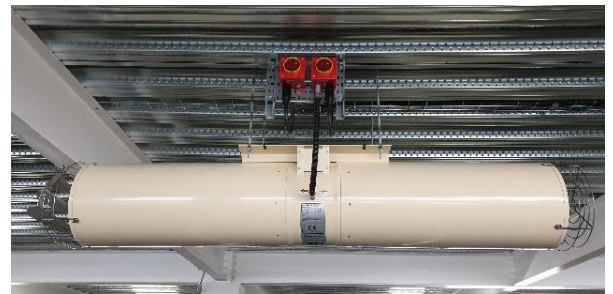
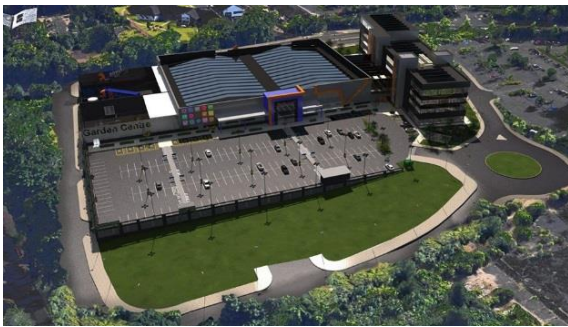


RETAILER, UK HEADQUARTERS – CAR PARK



Sector: Commercial/Retail
Client: Large Multi-National Highstreet Retailer
Scope of Works: New Build - Mechanical & Electrical Installation
Contract Value: £130K

A new 4670sqm underground carpark for a large retail and office building in the North of Plymouth. Our Engineers installed state-of-the-art switchgear, LED lighting, power, CCTV, IT, ATS dual power supplies, impulse ventilation and smoke clearance systems.



This 2-storey dedicated carpark completed in 2019 was commissioned by a highstreet retailer to function as parking for both their retail and offices at their UK Headquarters. The lighting system uses automatic detection and ultra-low energy LED lighting to provide an eco-friendly scheme whilst the bespoke automatic ventilation and smoke clearance systems are fire rated with dual fed power supplies to be used as both daily ventilation and smoke clearance.

Services Provided:

- Energy Efficient LED Lighting
- Lighting Controls
- LV Power Distribution
- Back Up Power Solutions with ATS Monitoring
- CCTV Systems
- General Power Services
- Ventilation & Smoke Clearance Systems

