

# CASE STUDY ASA HOUSE, HOEGATE STREET

# TOTUS



**Sector: Residential**

**Client: Chapter 1**

**Scope of Works: Mechanical and Electrical**

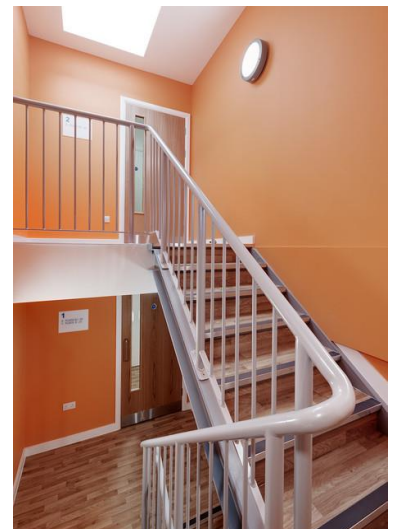
**Contract Value: £600k**



The works involved the conversion of an existing Job Centre/factory/warehouse into 30 self-contained flats for the homeless and vulnerable. The existing services were decommissioned and removed to facilitate the integration of a mezzanine floor including major structural changes.

Working closely with DNA we undertook the installation of both domestic and main landlord's M&E services to meet the challenging programme.

"The building in Hoegate Street is our first major development in Plymouth, but is a significant part of Chapter 1's Empty Homes programme which is supported by funds from the Homes & Communities Agency." **Chapter 1 Charity Press statement**



## Services Provided:

- Hot & cold water services
- Extract ventilation
- Above ground drainage & Sanitaryware
- Smoke ventilation
- Dry riser
- TV & Comms Infrastructure
- Lighting and Power Services
- Life, Safety, Security and Fire Systems