



# HEALTH+CARE

**TOTUS**

DELIVERING SPECIALIST ENGINEERING  
SERVICES TO THE HEALTHCARE SECTOR

# TOTUS + IS DIFFERENT

Based throughout the South West, Totus Engineering Ltd is a leading Mechanical, Electrical and Plumbing (MEP) specialist that continues to exceed expectations by putting its customers first. Established in 2010, our strategic growth has come from the quality of delivery and the repeat business that this has brought. Standing out in a crowded market is never easy, but for Totus the recipe has always been simple: Totus is different, Totus is a company that cares.



TOTUS IS DIFFERENT;  
TOTUS IS A COMPANY  
THAT CARES.

# TOTUS + DELIVERS

With over 100 people working out of our 3 regional offices, we have the most significant directly-employed MEP workforce throughout the South West.

“ Your team has ensured the project execution was managed effectively to ensure that the project relationship with the clinical team remained positive and professional. The quality of what we have actually achieved within the financial year is extremely impressive. It has been refreshing to work with a team who took ownership with a positive, professional approach; whilst listening to the priority of the Trust. ”

NHS Foundation Trust, Project Manager

## OUR SPECIALIST MEP HEALTHCARE SERVICES & EXPERIENCE INCLUDE:

- A full directly-employed specialist engineering team
- In-house NHS trained HBN and HTM compliance personnel
- Delivery of major projects as Principal Contractor
- P22 Principal Supply Chain Member
- In-house delivery of structured cabling & ICT services and air conditioning & ventilation
- Directly employed Renewables and Sustainability Manager
- In-house design services including BIM expertise and Revit software that enables us to integrate MEP services from RIBA Stage 3 onwards
- Dedicated aftercare service team to provide FM services to maintain our installations, protect your asset and optimise performance



# TOTUS + DISCOVERS

WE GET TO KNOW YOUR BUILDINGS,  
INSIDE AND OUT

Getting it right first time goes far beyond site procedures to manage defects. Early engagement allows our teams to bring about true transformational change to a project. Detailed surveys, involvement through the design process, clear specification management, sustainability and innovation all benefit complex projects providing the foundation to deliver excellence.

“ As any good engineer will tell you, a pragmatic first principles approach to any project is paramount to its successful delivery. ”



# TOTUS + CARES

CARE IS ALSO OUR BUSINESS

We care about building a business based not only on good engineering principles, but also on strong ethics when dealing with clients and our supply chain.

We care deeply about our employees and our clients.

We care about delivering excellent public works and the legacy that we leave behind.

We care about our role in assisting the NHS to achieve a net zero carbon footprint by 2040.

We care about our experienced and well-trained workforce being capable of delivering sustainable and resilient installations far into the future.

We care about apprenticeships and providing people with the opportunity of gaining a qualification, boosting confidence, self-esteem and improving social mobility.

We care about the safety, health and well-being of everyone on-site.



# TOTUS + HEALTH

BUILDING THE UK BACK TO HEALTH



Torbay Hospital CCU Plantroom



Nightingale Hospital Exeter



Nightingale Hospital Exeter



Torbay Hospital Theatres 1&2



Lighthouse Covid Testing Laboratory



RCHT RESUS/RATS Department



RCHT RESUS/RATS Department



Lighthouse Covid Testing Laboratory



Musgrove Park Hospital ICU



Musgrove Park Hospital ICU



# TOTUS + NET ZERO

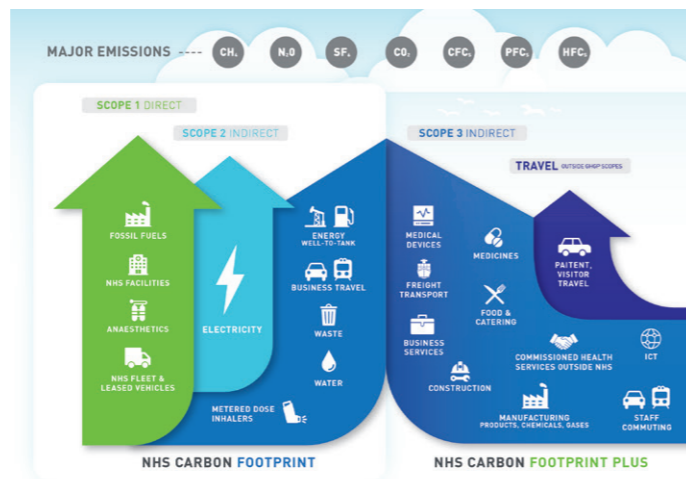
GETTING TO NET ZERO AND BUILDING  
BACK A GREENER NHS

With the health and care system in England being responsible for an estimated 4-5% of the country's carbon footprint, we can help you to reduce the environmental impact of your services to reach net zero.

With the NHS commitment to reaching net zero by 2040 for everything that they control directly (the NHS Carbon Footprint), we are well placed to provide expertise and advice to clients, consultants and main contractors who are looking to develop energy efficient, sustainable, renewable solutions for buildings.

“ With almost 700 people dying potentially avoidable deaths due to air pollution every week we are facing a health emergency as well as a climate emergency. ”

NHS chief executive Sir Simon Stevens



“ We have a moral duty to leave this world in a better condition than what we inherited. ”


In addition to influencing the design, procurement and delivery of projects through our in-house expertise and advice, we also consider our own actions in respect of Scope 3.

The Totus 'Green Teams' have been created to drive best practice across our offices and down through our supply chain. The introduction of supply chain sustainability benchmarking, sustainable packaging, proof of ethical purchase and alternative options gives our customers the opportunity to make considered choices.


Glassfields, Bristol



# TOTUS + WE CARE



We care about our customers and strive to develop long-term, trusting relationships where we can drive continuous improvement together. Successful projects are developed from day one; our vision is to work with you as part of your team to deliver better, faster and greener solutions, improving and maintaining your assets for years to come.



“ There’s something special about working in a hospital. It feels like I’m doing something good. ”

Mark Draper, Totus Mechanical Supervisor

“ It’s rewarding and fulfilling to be part of something that will hopefully benefit many people for years to come. ”

Gavin Derbyshire, Totus Renewables & Sustainability Manager

“ 2020 was an extraordinary year for many and a defining year for the NHS. Working on an NHS project feels like I’m giving something back. ”

Ross Bennett, Totus Contracts Manager

# TOTUS + WE CARE

### Exeter Head Office

Splatford Barton  
Kennford, Exeter  
Devon, EX6 7XY

### Plymouth Office

10 Alder Court, Bell Close  
Newnham Industrial Estate  
Plympton, Plymouth  
Devon, PL7 4JH

### Bodmin Office

Talland  
St Inguner Country Offices  
Lanivet, Bodmin  
Cornwall, PL30 5HS

### Contact Details

Exeter: 01392 834 300  
Plymouth: 01752 295 867  
Bodmin: 01208 831 738



[enquiries@totus.co.uk](mailto:enquiries@totus.co.uk)

[www.totus.co.uk](http://www.totus.co.uk)



# TOTUS

